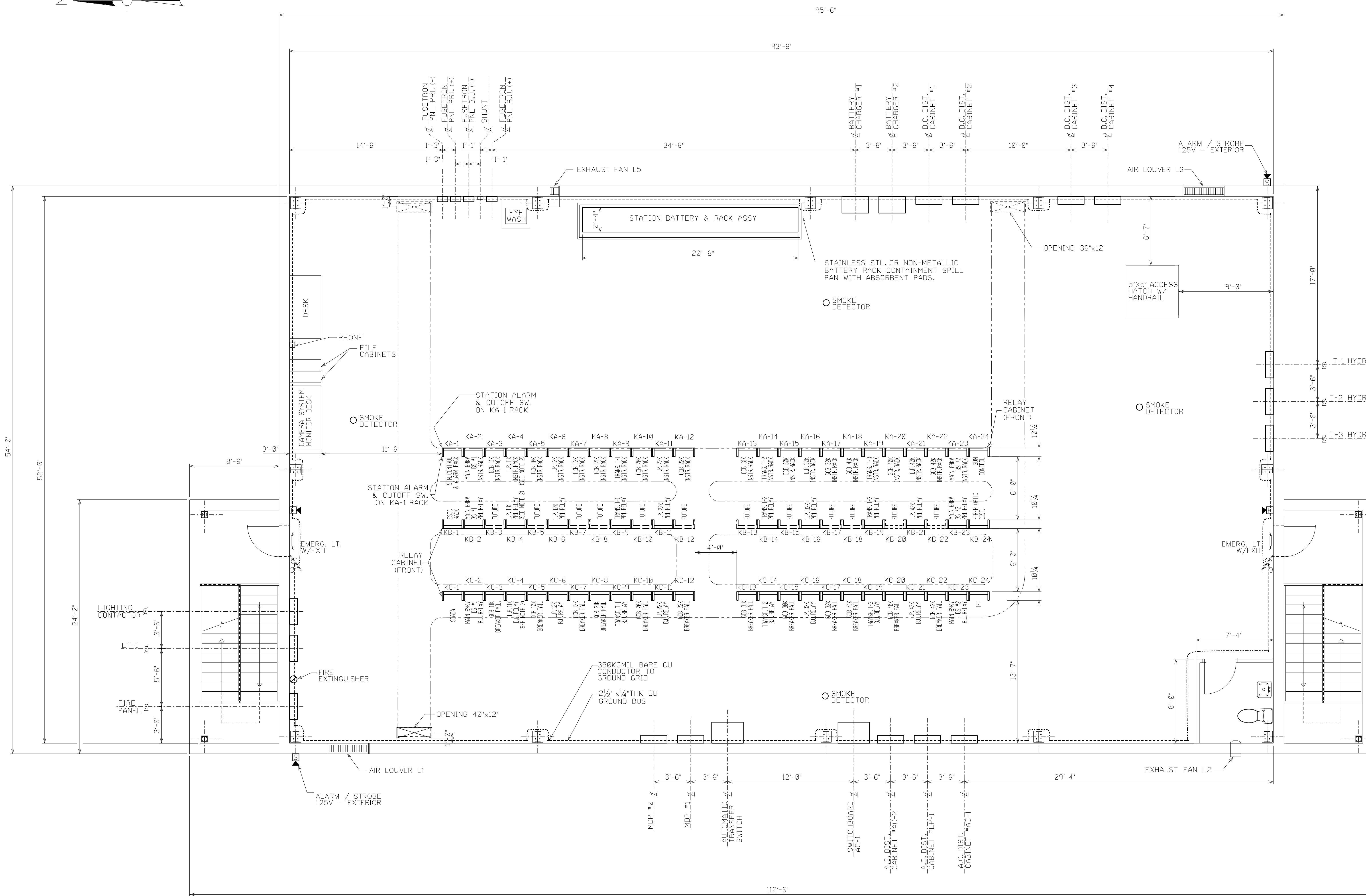
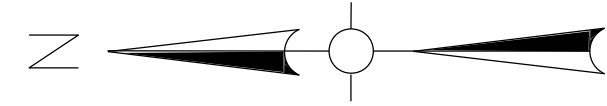


STATION NORTH



GIS BUILDING SECOND FLOOR PLAN

**SYMBOLS:**

- 3-WAY SWITCH (FOR LTS.)
- 350MCM BTN. GROUND CABLE
- GROUND BUS, 2" X 1/4" AROUND INTERIOR OF BUILDING, JUMPER CABLES BETWEEN OPENINGS
- CABLE TRAYS
- PENHORN ALARM/STROBE 125V - AMBER - EXTERIOR (INSTALLED ON SIDE OF SWITCHYARD)
- COMBINATION HORN/STROBE 80" AFF MIN.

**NOTES:**

1. EYEWASH STATION SHALL BE MANUFACTURED BY SPEAKERMAN, MODEL SE-400.
2. L.P. 11K RESERVED FOR MOBILE TRANSFORMER AND FUTURE SVC.

**REFERENCE DRAWINGS:**

1. KEY PLAN AND PROFILE..... DWG. #740554-A
2. GIS BUILDING FIRST FLOOR PLAN..... DWG. #738075-A

THIS DRAWING IS ADAPTED FROM PSE&G STANDARD DWG. 443403-A-1

NO	DATE	DESCRIPTION	DWN	CKD	EXD	APD

REVISION	
LAWNSIDE SUBSTATION 69KV GIS BUILDING CONTROL ROOM SECOND FLOOR PLAN ELECTRICAL	
<b>PSEG</b> PUBLIC SERVICE ELECTRIC AND GAS COMPANY ELECTRIC DELIVERY COMPANY - ASSET RELIABILITY, NEWARK, N.J.	
DRAWN	BY: ROSENTHAL
CHECKED	BY: M. PULASKI
DATE	02/29/19
WBS/SO	90LAWNSIDE69KV
APPROVED	BY: SARGENT & LUNDY
<b>740555 A</b>	

SYSTEM CODE: Z140  
AREA ELEV: 66ZZ

GENERAL NOTES  
USE PRINTS OF LATEST REVISION ONLY.  
DO NOT SCALE - USE DIMENSIONS ONLY.  
FOR LIST OF REFERENCE DRAWINGS SEE DRAWING NO THIS DRAWING.  
THIS DRAWING SUPERSEDES NONE  
THIS DRAWING IS SHEET NO 1 OF 1 SHEETS.

NOT FOR CONSTRUCTION

REV	DATE	DESCRIPTION	BY	CHKD	APPD
B	09-02-20	COMMENTS INCORPORATED	CJ	MP	JIS
A	03-26-20	ISSUED FOR REVIEW (S&L/MS/DR/KV)	CI	MP	JIS



ANY MODIFICATION OR ADDITION TO THIS DRAWING BY ANY ORGANIZATION OTHER THAN SARGENT & LUNDY IS NOT THE RESPONSIBILITY OF SARGENT & LUNDY

**EUGENE R. PORZIO**  
N.J. PROFESSIONAL ENGINEER  
LIC. NO. 34431  
C.D.A. 246027971100

PROJ. No. 13739-103